

<h1>NOTAC</h1> <p>Notice to Aircrew</p>	REF	60/20
	TYPE	
	VALID	TO TBA

Replaces NOTAC 42/20

VFR Easterly departures v2:



Toowoomba:

Runway 12: Maintain upwind till passing 3000', turn left track direct Toowoomba climb and maintain 4000' overhead.

Runway 30: Maintain 2500' circuit height in the Circuit Pattern until established on base leg runway 30, then once north of the RWY centerline commence climb to 4000' tracking direct Toowoomba.

Big Hill:

Runway 12: Maintain upwind till passing 3000', turn left track direct Big Hill on climb to and maintain 4000'.

Runway 30: Maintain 2500' circuit height in the Circuit Pattern extend downwind until abeam Sugar Loaf Hill (Antenna with red beacon at night), turn left track direct Big Hill climb and maintain 4000'.

IFR departures complying with SID in (In VMC Conditions):

Maintain runway track until 3000' (minimum Altitude), then comply with SID.

New VFR Approach / Departure plates attached to NOTAC

Authorisation:

MS/DHOO

YBWW / WTB

BRISBANE

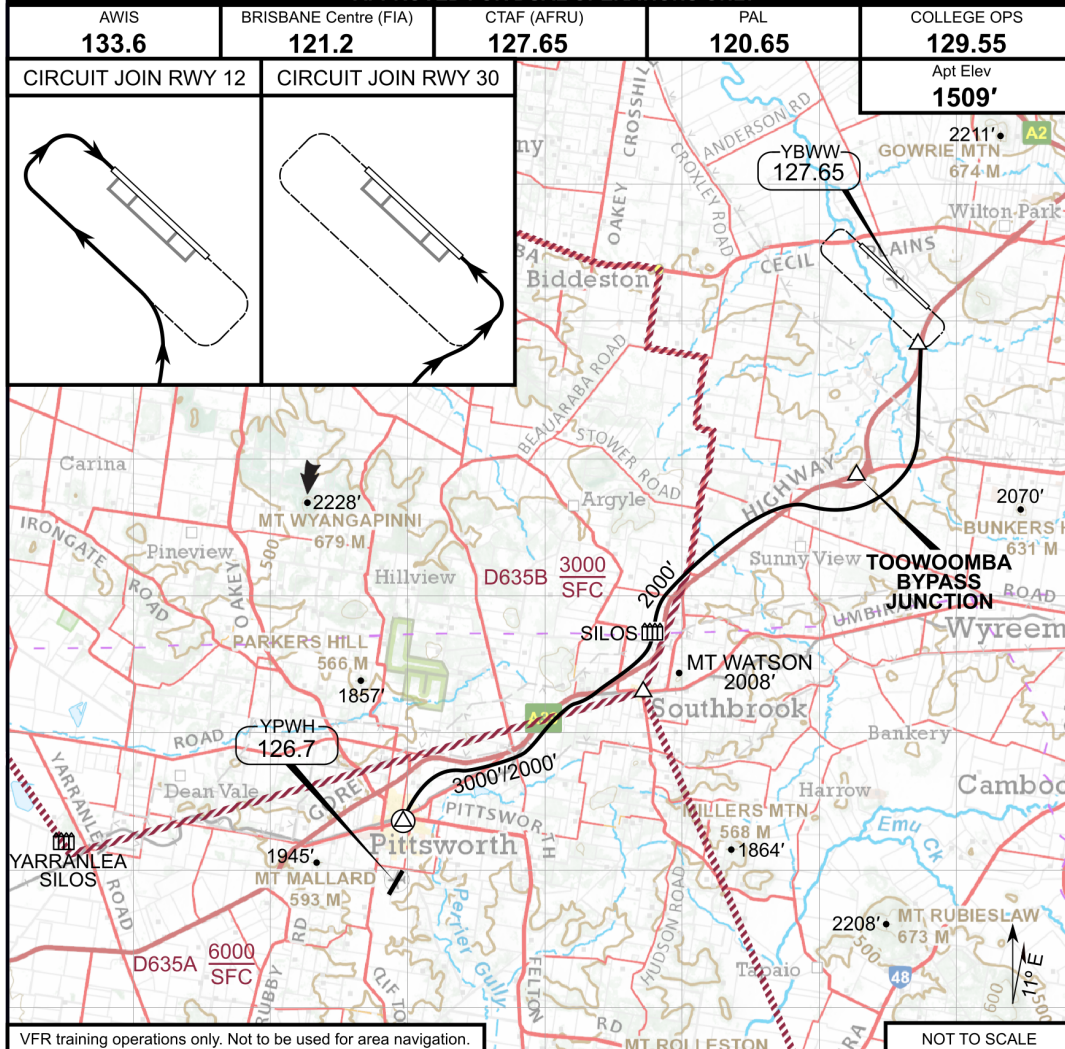
WEST WELLCAMP

12 AUG 2020
Eff 12 Aug

fta
J.5

BRISBANE WEST
WELLCAMP, QLD, AUST
T/A LOW LEVEL ARR. Rwy 12 & 30

APPROVED FOR DUAL OPERATIONS ONLY



HEAVY TRAFFIC SEPARATION

NO ARR/DEP/CCT PERMITTED: 20min prior to heavy traffic ETA,
5min after heavy traffic arrival,
10min prior to heavy traffic ETD,
5min after heavy traffic departure.

ALTITUDE	ARRIVAL PROCEDURE
3000'	When cloud base is above 3000', but less than 4500'. Apply normal arrival procedure.
2000'	When cloud base is at or below 3000' apply low level arrival procedure.

Changes: danger area marking, Minima spec removal.

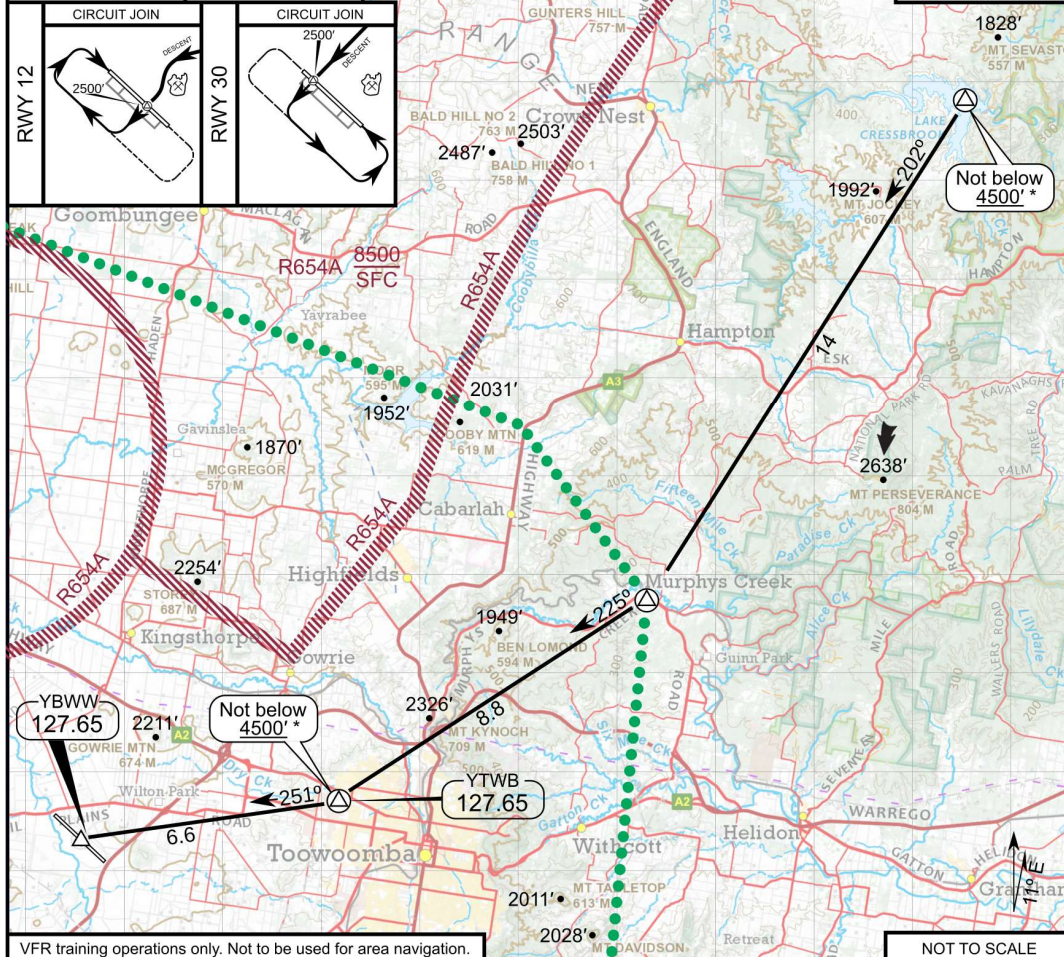
YBWW / WTB
BRISBANE
WEST WELLCAMP

12 AUG 2020
Eff 12 Aug



**BRISBANE WEST
WELLCAMP, QLD, AUST**
NORTH ARR. Rwy 12 & 30

BRISBANE Centre (FIA) 121.2	CTAF (AFRU) 127.65	YTWB AWIS 127.05	YTWB PAL 122.4	YBWW AWIS 133.6	YTWB Apt Elev 2087'
YBWW PAL 120.65	COLLEGE OPS 129.55				YBWW Apt Elev 1509'



VFR training operations only. Not to be used for area navigation.	NOT TO SCALE
HEAVY TRAFFIC SEPARATION	
NO ARR/DEP/CCT PERMITTED: 20min prior to heavy traffic ETA, 5min after heavy traffic arrival, 10min prior to heavy traffic ETD, 5min after heavy traffic departure.	
HOLDING PROCEDURES	
On arrival: Join left-hand holding circuit on the Northern side of the field maintaining 2500' until the conflict is resolved. On completion, flying RWY HDG, turn right, rejoin the CCT early downwind. When flying circuits: From mid. field downwind, turn right, overfly the field. Fly left-hand holding circuit until the conflict is resolved. On completion, flying RWY HDG, turn right, rejoin the CCT early downwind.	
NOTES	
* Except in bad weather. Broadcast new level and intentions on YTWB CTAF at the procedure entry point.	

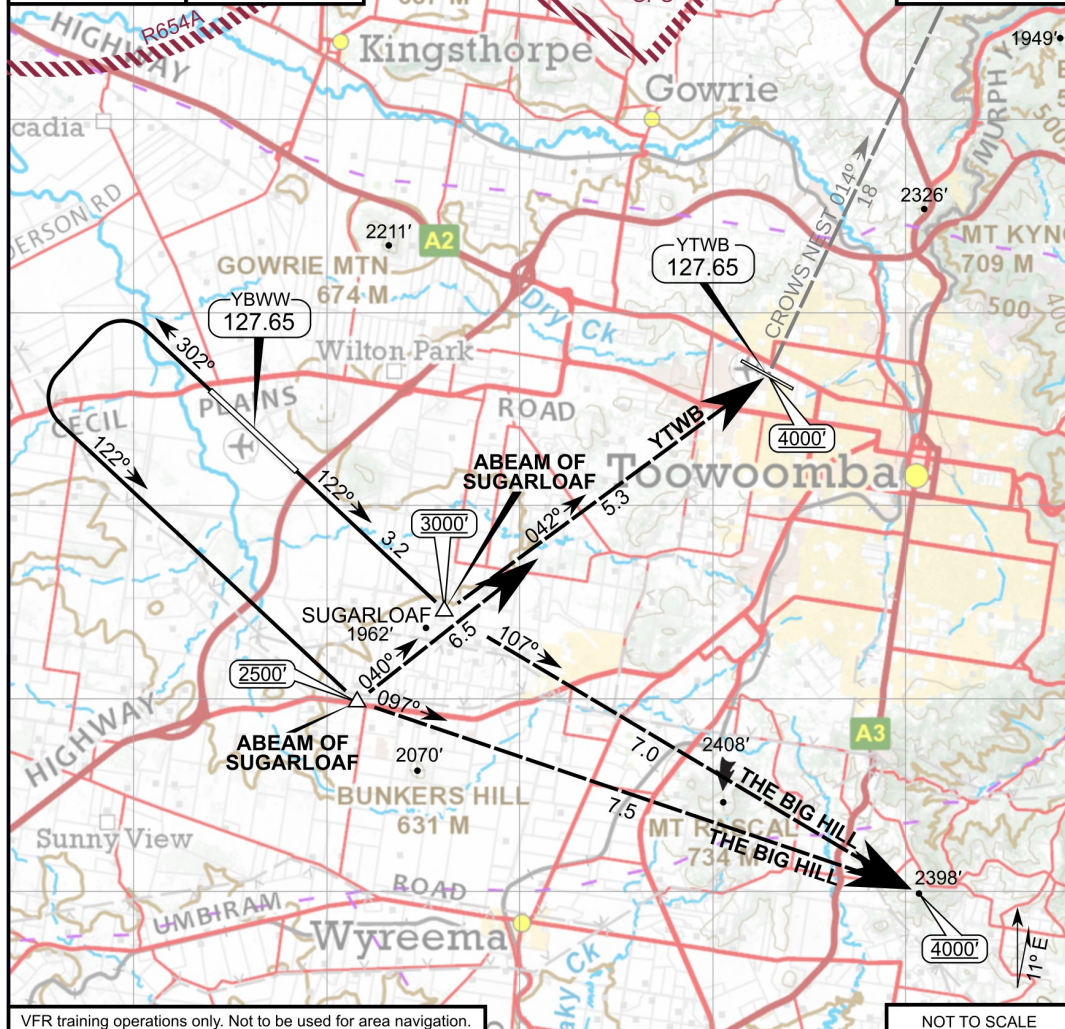
YBWW / WTB
BRISBANE
WEST WELLCAMP

12 AUG 2020
Eff 12 Aug



**BRISBANE WEST
WELLCAMP, QLD, AUST**
EAST DEP. Rwy 12 & 30

YBWW AWIS 133.6	YBWW PAL 120.65	COLLEGE OPS 129.55	CTAF (AFRU) 127.65	BRISBANE Centre (FIA) 121.2	YBWW Apt Elev 1509'
YTWB AWIS 127.05	YTWB PAL 122.4				YTWB Apt Elev 2087'



INITIAL CLIMB/ROUTING

RWY 12	After take-off climb to 3000' tracking 122°.
RWY 30	After take-off, climb in the circuit pattern to 2500'. Extend downwind to the point abeam Sugarloaf hill.

TRANSITIONS

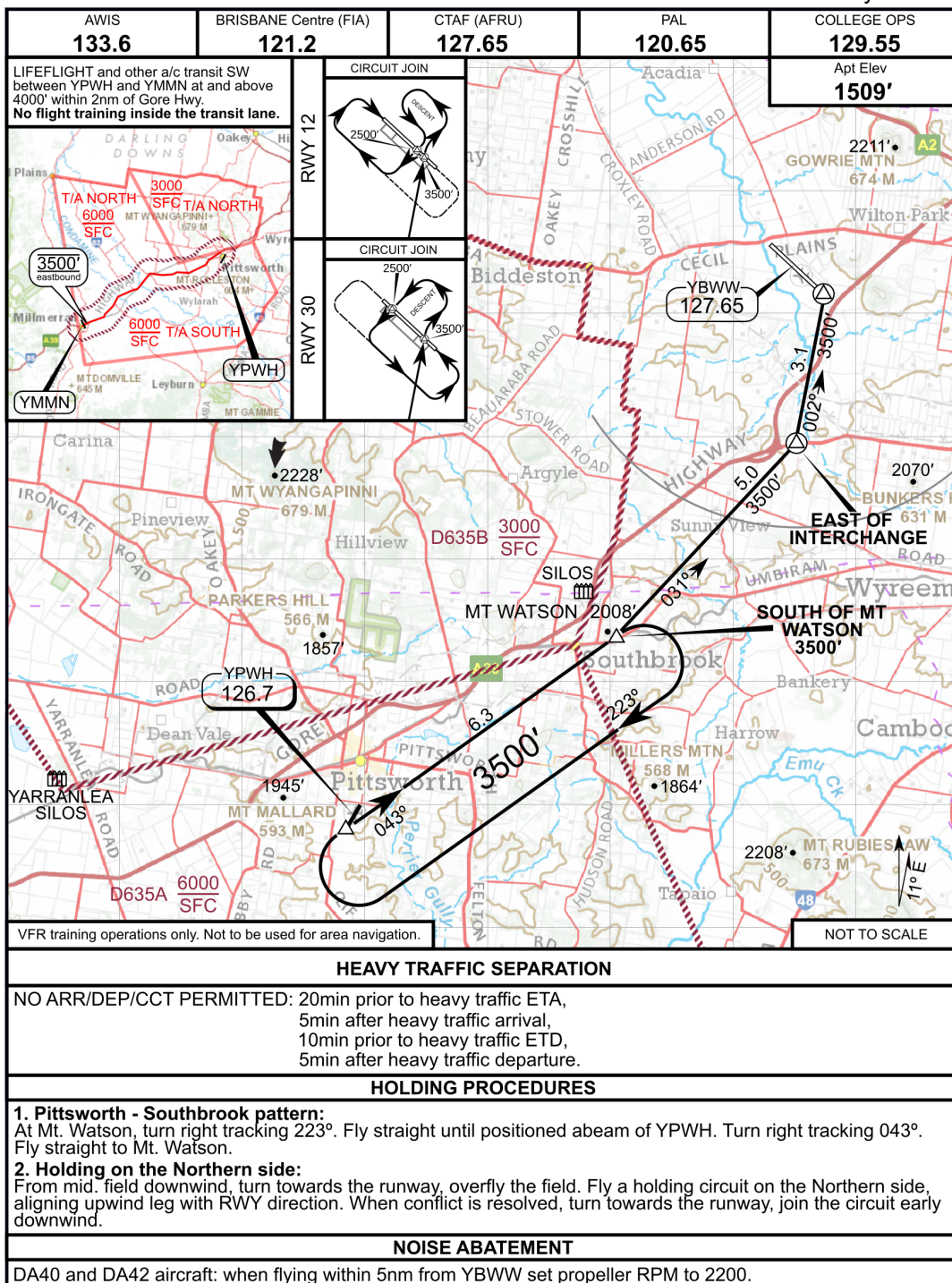
YTWB	Abeam of Sugarloaf hill identify and track to YTWB, climb and maintain 4000' once North of the extended RWY centreline.
THE BIG HILL	Abeam of Sugarloaf hill, identify and track to The Big Hill, climb and maintain 4000'.

YBWW / WTB BRISBANE WEST WELLCAMP

12 AUG 2020
Eff 12 Aug

fta
J.2

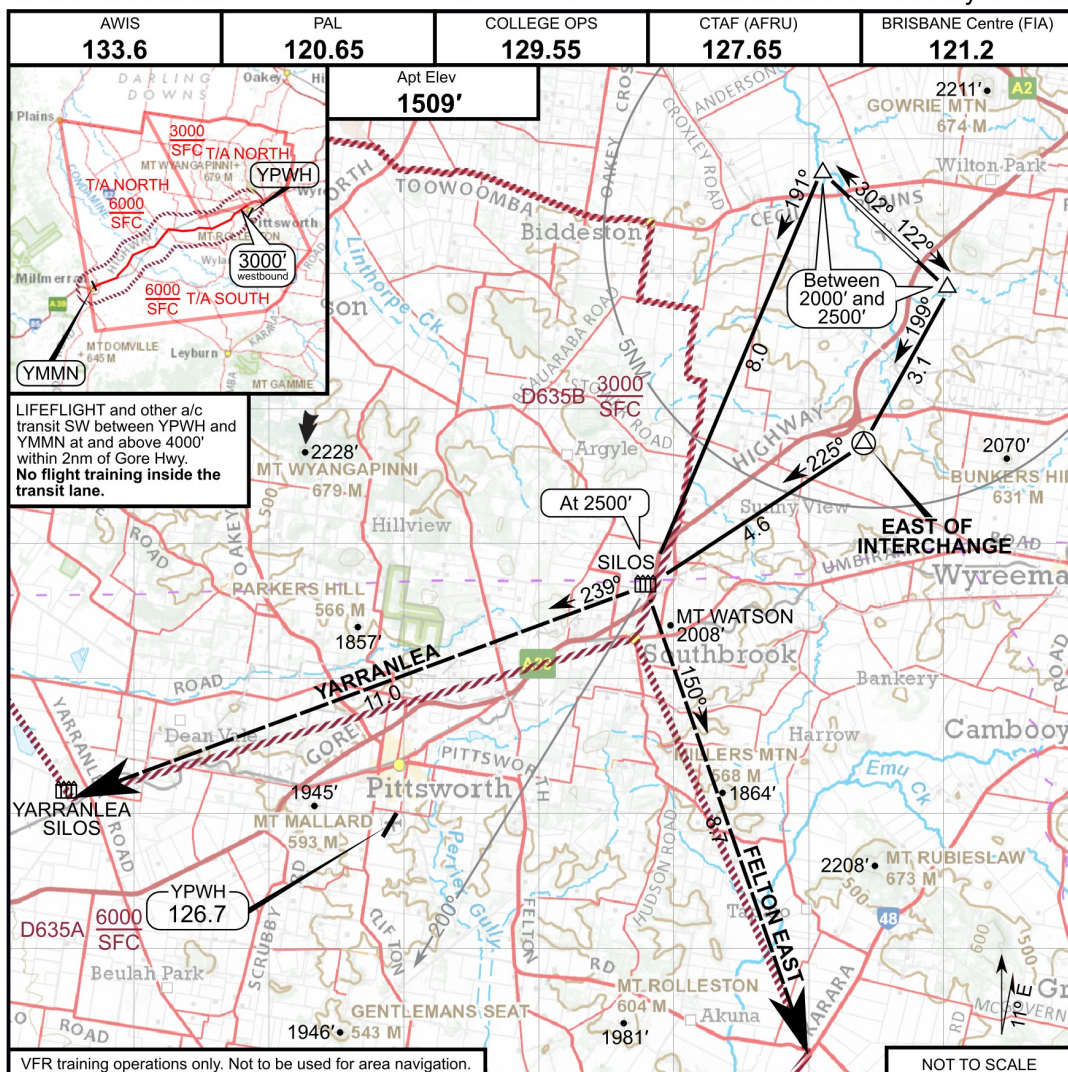
BRISBANE WEST WELLCAMP, QLD, AUST T/A SOUTH ARRIVAL Rwy 12 & 30



Changes: merging RWY 12 and 30 arrivals into one. Noise abatement procedures. Overhead join. Introduction of the LOE. Removal of minima spec.

12 AUG 2020
Eff 12 Aug

BRISBANE WEST
WELLCAMP, QLD, AUST
T/A SOUTH DEP. Rwy 12 & 30



INITIAL CLIMB/ROUTING		NOISE ABATEMENT
RWY 12	After take-off climb tracking 122°. Turn crosswind, track 199°, climb 2500'. Once passed the road junction, identify and track to Southbrook silos.	DA40 and DA42 aircraft, when flying within 5nm from YBWW set propeller RPM to 2200 .
RWY 30	After take-off climb tracking 302°. Turn crosswind, track 191°, climb 2500', identify and track to Southbrook silos.	
TRANSITIONS		
YARRANLEA	At Southbrook silos turn right tracking 239°, identify and track to Yarranlea silos, climb 3000'.	
FELTON EAST	At Southbrook silos turn left tracking 150°, identify and track to Felton East, climb as required to max. 6000'.	
TRAINING AREA	At Southbrook silos turn left tracking 150°-200°. Stay below 3000' until passed abeam YPWH.	

Changes: noise abatement procedures. Routing for RWY 12 departure. T/A departure.